



<b>Prüfbericht - Nr.: 0114058887n2 001</b>		<b>Seite 1 von 5</b>	
<i>Test Report No.:</i>		<i>Page 1 of 5</i>	
<b>Auftraggeber:</b> <i>Client:</i>	Chi Mei Corporation 59-1, San Chia, Jen Te, Tainan City 71702, Taiwan, R.O.C.		
<b>Gegenstand der Prüfung:</b> <i>Test Item:</i>	POLYCARBONATE		
<b>Bezeichnung:</b> <i>Identification:</i>	WONDERLITE® PC-6600		
<b>Anlieferungszustand:</b> <i>Delivery condition:</i>	apparent good	<b>Eingangsdatum:</b> <i>Date of Receipt:</i>	2016-12-08
<b>Prüfort:</b> <i>Testing location:</i>	TÜV Rheinland (Shanghai) Co., Ltd.		
<b>Prüfgrundlage:</b> <i>Test specification:</i>	According to RoHS (recast): Restriction of the Use of Certain Hazardous Substances in Electrical and Electronic Equipment, 2011/65/EU last amended by (EU) 2015/863: Total Content of Lead, Cadmium, Mercury, Chromium VI, Polybrominated Biphenyls, Polybrominated Diphenyl Ethers; and Benzylbutyl phthalate (BBP), Dibutyl phthalate (DBP), Bis(2-ethylhexyl) phthalate (DEHP), Diisobutyl phthalate (DIBP) and Phthalates (DPP/DINP/DIPP/DNOP), Hexabromocyclododecane (HBCDD)		
<b>Prüfergebnis:</b> <i>Test result:</i>	The test results are the measurements, stated in the test report.		
<b>geprüft: tested by:</b>	<b>kontrolliert: checked by:</b>		
			
2017-01-03 Anne Chen /Coordinator		2017-01-03 Carl Chang /Department Manager	
<b>Datum</b> <i>Date</i>	<b>Name/Stellung</b> <i>Name/Position</i>	<b>Unterschrift</b> <i>Signature</i>	<b>Datum</b> <i>Date</i>
<b>Sonstiges/ Other Aspects:</b>			
Test period: 2016-12-08 – 2017-01-03			
<b>Abkürzungen:</b>	<b>ok / P = entspricht Prüfgrundlage</b>	<b>Abbreviations:</b>	<b>ok / P = passed</b>
	<b>fail / F = entspricht nicht Prüfgrundlage</b>		<b>fail / F = failed</b>
	<b>n.a. / N = nicht anwendbar</b>		<b>n.a. / N = not applicable</b>
<b>Dieser Prüfbericht bezieht sich nur auf das o.g. Prüfmuster und darf ohne Genehmigung der Prüfstelle nicht auszugsweise vervielfältigt werden. Dieser Bericht berechtigt nicht zur Verwendung eines Prüfzeichens.</b> <i>This test report relates to the a. m. test sample. Without permission of the test center this test report is not permitted to be duplicated in extracts. This test report does not entitle to carry any safety mark on this or similar products.</i>			



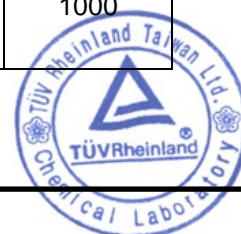
Test Report No. : 0114058887n2 001 2017-01-03  
 Customer : Chi Mei Corporation  
 Test Method : Total Cadmium, Lead, Mercury, Chromium  
 - Ref. to IEC 62321-4:2013 and IEC 62321-5:2013  
 Chromium (VI)  
 - For Metal material - Ref. to IEC 62321-7-1:2015  
 - For Plastic or Electronic material – Ref. to IEC 62321:2008 Annex C  
 - For Leather material - Ref. to ISO 17075:2007  
 PBBs, PBDEs – Ref. to IEC 62321-6:2015

Sample Material Lab.-No.		LoD	WONDERLITE® PC-6600 plastic/white TCL161208-133
Cadmium (Cd)	mg/kg	2	n.d.
Lead (Pb)	mg/kg	2	n.d.
Mercury (Hg)	mg/kg	2	n.d.
Chromium VI (Cr VI)	mg/kg	2	n.d.
<b>Sum of Polybrominated biphenyls (PBBs)</b>	mg/kg	-	n.d.
Monobromobiphenyl	mg/kg	5	n.d.
Dibromobiphenyl	mg/kg	5	n.d.
Tribromobiphenyl	mg/kg	5	n.d.
Tetrabromobiphenyl	mg/kg	5	n.d.
Pentabromobiphenyl	mg/kg	5	n.d.
Hexabromobiphenyl	mg/kg	5	n.d.
Heptabromobiphenyl	mg/kg	5	n.d.
Octabromobiphenyl	mg/kg	5	n.d.
Nonabromobiphenyl	mg/kg	5	n.d.
Decabromobiphenyl	mg/kg	5	n.d.
<b>Sum of Polybrominated diphenyl ethers (PBDEs)</b>	mg/kg	-	n.d.
Monobromodiphenyl ether	mg/kg	5	n.d.
Dibromodiphenyl ether	mg/kg	5	n.d.
Tribromodiphenyl ether	mg/kg	5	n.d.
Tetrabromodiphenyl ether	mg/kg	5	n.d.
Pentabromodiphenyl ether	mg/kg	5	n.d.
Hexabromodiphenyl ether	mg/kg	5	n.d.
Heptabromodiphenyl ether	mg/kg	5	n.d.
Octabromodiphenyl ether	mg/kg	5	n.d.
Nonabromodiphenyl ether	mg/kg	5	n.d.
Decabromodiphenyl ether	mg/kg	5	n.d.

Notes:

- n.d. - not detected
- n.a. - not applicable
- LoD - Limit of Detection
- mg/kg is equal to ppm (parts per million)

	Cd	Cr(VI)	Pb	Hg	PBBs	PBDEs
<b>Maximum permissible Limit acc. to 2011/65/EU (mg/kg)</b>	100	1000	1000	1000	1000	1000



Test Report No. : 0114058887n2 001 2017-01-03  
 Customer : Chi Mei Corporation  
 Test Method : BBP/DBP/DEHP/DIBP - Organic solvent extraction, analyzed by GCMS (Ref. to DPP/DINP/DIPP/DNOP DIN EN 62321-8:2014/ IEC 62321-8 (111/321/CD))  
 HBCDD - organic solvent extraction, determination by GC-MS

Sample Material Lab.-No.	LoD	WONDERLITE® PC-6600 plastic/white TCL161208-133
Diethylhexylphthalate (DEHP) mg/kg	50	n.d.
Dibutylphthalate (DBP) mg/kg	50	n.d.
Benzylbutylphthalate (BBP) mg/kg	50	n.d.
Diisobutylphthalate (DIBP) mg/kg	50	n.d.
Diphenylphthalate (DPP) mg/kg	50	n.d.
Diisononyl phthalate (DINP) mg/kg	50	n.d.
Diisopentyl phthalate (DiPP) mg/kg	50	n.d.
Di-n-octyl phthalate (DNOP) mg/kg	50	n.d.

	BBP	DBP	DEHP	DIBP
<b>Maximum permissible Limit acc. to (EU) 2015/863 (mg/kg)</b>	1000	1000	1000	1000

Sample Material Lab.-No.	LoD	WONDERLITE® PC-6600 plastic/white TCL161208-133
Hexabromocyclododecane (HBCDD) mg/kg	100	n.d.

**Notes:**

- n.d. - not detected
- n.a. - not applicable
- LoD - Limit of Detection
- mg/kg is equal to ppm (parts per million)

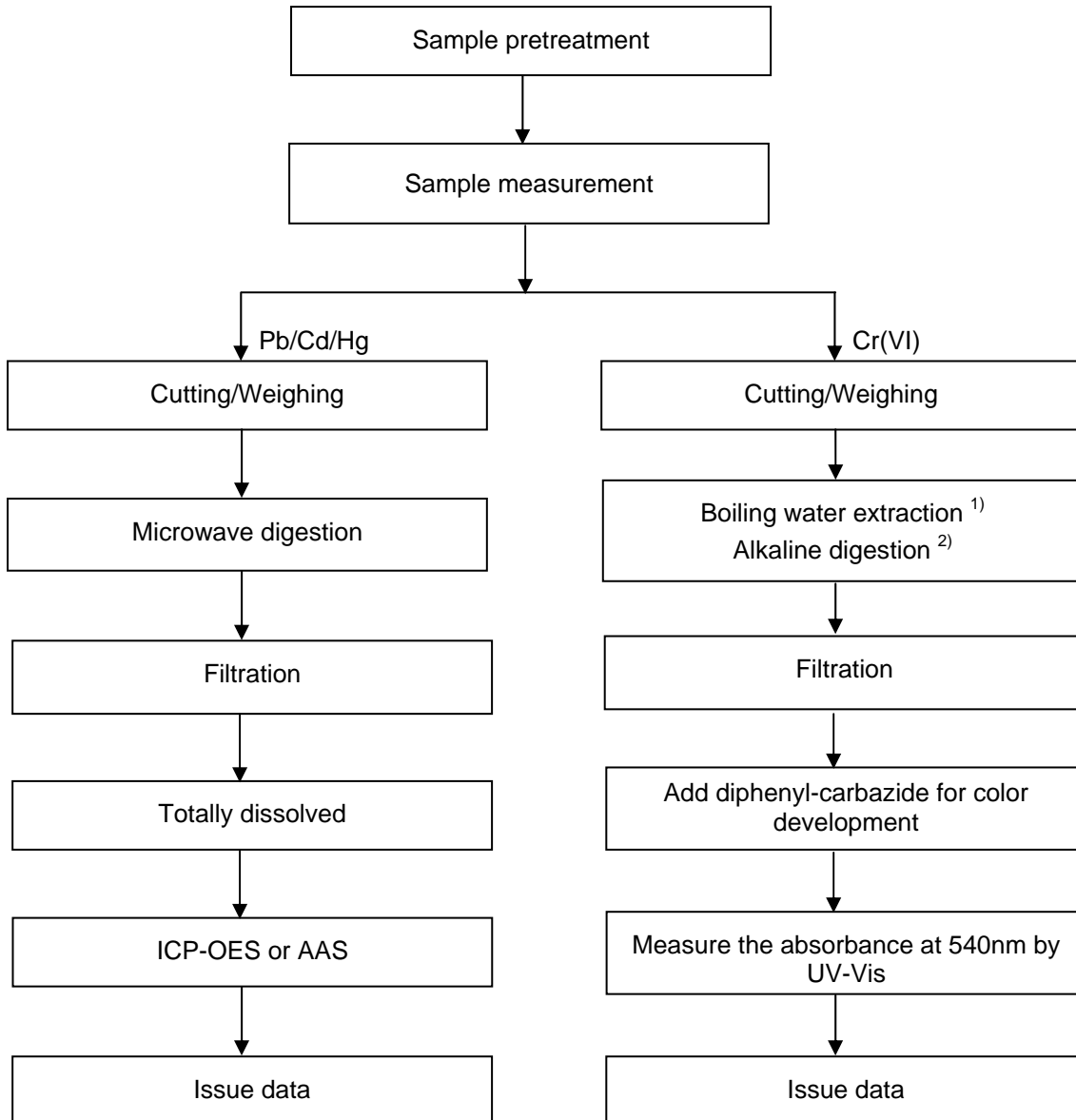
**Test Sample**


Test Report No. : 0114058887n2 001  
Customer : Chi Mei Corporation

2017-01-03

**Testing procedure:**

RoHS (Pb, Cd, Hg, Cr(VI))

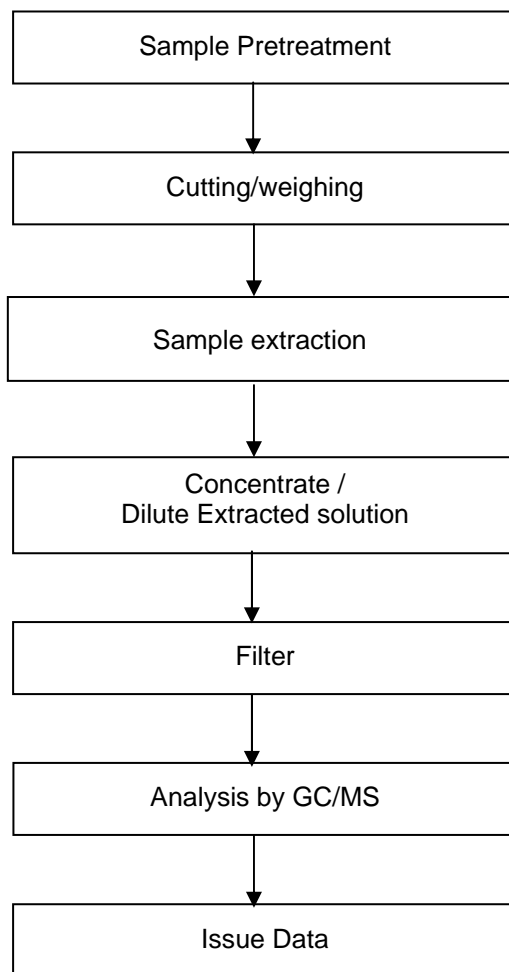
Notes: <sup>1)</sup> For metallic material  
<sup>2)</sup> For non-metallic material

Test Report No. : 0114058887n2 001  
Customer : Chi Mei Corporation

2017-01-03

**Testing procedure:**

RoHS (PBBs/PBDEs), DEHP/DBP/BBP/DIBP/DPP/DINP/DIPP/DNOP, HBCDD



--- End of Test-Report ---